

MOBI-MAT® RECPATH KIT INSTALLATION

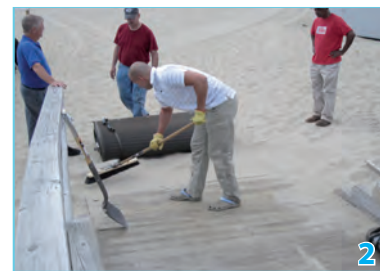
Pre-installation:

- Mobi-Mat® is supplied in kits. A kit includes one or several RecPath rolls and the necessary tools for the installation, packed in a carton box.

- Tools included are Gloves, connecting brackets & staples.

- Inspection of the area prior to installation of the Mobi-Mat® RecPath is recommended:

- Level ground and rake to clear debris and sharp objects
- Design path to be as level as possible (consider use by person in manual wheelchair. (i.e., no deep footprints in soft sand).
- If Installing Mobi-Mat® RecPath to extend an existing pathway, sidewalk, or boardwalk, pay particular attention to proper anchoring.



Start creating your beach pathway:

- Unroll Mobi-Mat® RecPath and lay in desired position, starting with one end completely aligned with the sidewalk or boardwalk you are extending it from.

- Once RecPath is aligned to sidewalk or boardwalk continue to unroll mat.

- Secure the starting extremity of the mat using the U-shaped staples provided. (Depending on width, mats might require 2 or 3 staples at each end)

- Insert staples through the eyelets at the end, closest to the sidewalk/boardwalk first.



Stretch, Secure & Anchor your mats down.

- Stretching the Mobi-Mat® is very important to ensure a flat, even surface, preventing waves and bumps

- U-shaped staples can be used to secure the mats sides.

Start by stretching one end, and then secure it by fastening the end of the Mobi-Mat® RecPath with u-shaped staples. Insert staples into grommets. The u-shaped staples could be inserted in an angle, using them as supports to gently stretch the mat.

*** Please note if connecting 2 or more RecPath mats, do not insert staples at the end of the path. Please see instructions below. ***

*** If only installing 1 mat, please directly go to picture 9 ***



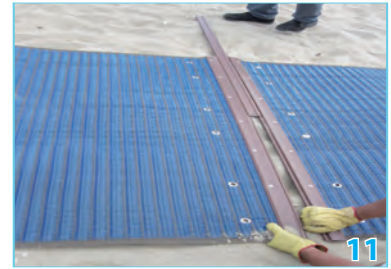
Connecting Multiple RecPath Mats

- When connecting two or more mats, lay mat ends completely parallel, and then slide the connector bar into position.
- Then insert staples through the eyelets at the extremities of the mats.



Finishing your straight pathway or creating a "T" or "L" shape.

Dig a 4" (10cm) deep and 3" (8cm) wide trench at the end of the solid path and position the end of the Mobi-Mat® RecPath at 30 degrees with the end straight down into the sand and flush against the solid path. Anchor the mat down using the U shape staples and bury the excess close to the stakes as possible. Neither end should be exposed to the surface.



Creating Turning / Resting Areas:

- We do recommend you to overlap the mats to create "T" or "L" shape paths to better serve and easier access for pedestrians, wheelchair users and baby strollers into and out of sand areas.
- Broom or blower is recommended to clean surface.
- Once a month, if too much sand accumulates underneath, roll back the mats and level the ground. Then re-do installation.



Tips:

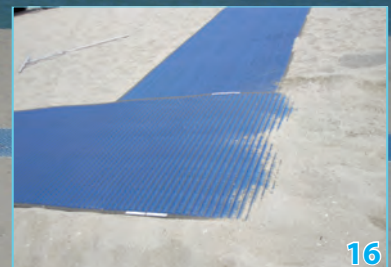
- The mobi-mat in conjunction with wood slats can create different style paths like the "Y" shape.
- A wood slat can be used for aesthetic purposes. This will create a more even and smoother walk path.



Each mat is unique. You might receive a mat which might have a weave pulled. This does not affect the overall high quality of the mat or its durability.



PARKS & REC ACCESS



DMS
DESCHAMPS MAT SYSTEMS

75 Kingsland Avenue, Suite 1
Clifton NJ 07424, USA
Tél. + 1 973 928 3040 - Fax. + 1 973 928 3041
info@mobi-mat-dms.com

www.mobi-mat.com

**AGREEMENT FOR RECIPROCITY BETWEEN
APPLETON AND MENASHA
FOR PARKS AND RECREATION SERVICES
2009-2011**

The City of Appleton, Wisconsin, and the City of Menasha, Wisconsin, hereby agree to grant residency status to the citizens of the opposite community for the sole purpose and privilege of participating in each city's park and recreation services.

- 1) The scope of this agreement is limited to the granting of the privileges of residency.
- 2) Each city retains complete control of the policies, operation, administration, and funding of the facilities and services it provides.
- 3) The home community will supply the reciprocating community with residency information for participant verification.
- 4) This agreement shall be in effect from January 1, 2009, through December 31, 2011. It may be extended for another term by mutual agreement of both cities. With thirty days notice to the other city, either community may terminate, without penalty, this agreement.

Date: _____

Mayor of Appleton

Mayor of Menasha

Appleton City Clerk

Menasha City Clerk

Appleton City Attorney

Menasha City Attorney

**AGREEMENT FOR RECIPROCITY BETWEEN
APPLETON AND NEENAH
FOR PARKS AND RECREATION SERVICES
YEAR 2009-2011**

The Parks and Recreation Departments of the City of Appleton, WI and the City of Neenah, WI, hereby agree to grant resident status, in regard to fees, to the citizens of the other community for the sole purpose of participating in each city's park and recreation services, for the term of this agreement listed below.

- 1) The scope of this agreement is limited to the granting of the privileges of residency in regard to fees only.
- 2) Each city retains complete control of policies, operation, administration and funding of the facilities and services it provides.
- 3) The home community will supply the reciprocating community with residency information for participant verification at the reciprocating community.
- 4) This agreement shall be in effect from January 1, 2009 through December 31, 2011.
The agreement may be extended for another term by mutual agreement of both cities, or terminated, without penalty, by either city, with thirty days written notice of the other city.

Date: _____

Mayor of Appleton

Mayor of Neenah

Appleton City Clerk

Neenah City Clerk

Appleton City Attorney

Neenah Parks & Recreation
Commission President

Launch Sites

● Hand Launch

■ Motor Boat Ramp

Stopovers



1. Woodmere Dock
2. Hewlett Pt. Park
3. Bay County Park
4. Bay Park Ramp
5. Tralfor Boat Basin
6. Harbor Isle Beach
7. Long Beach Ramp



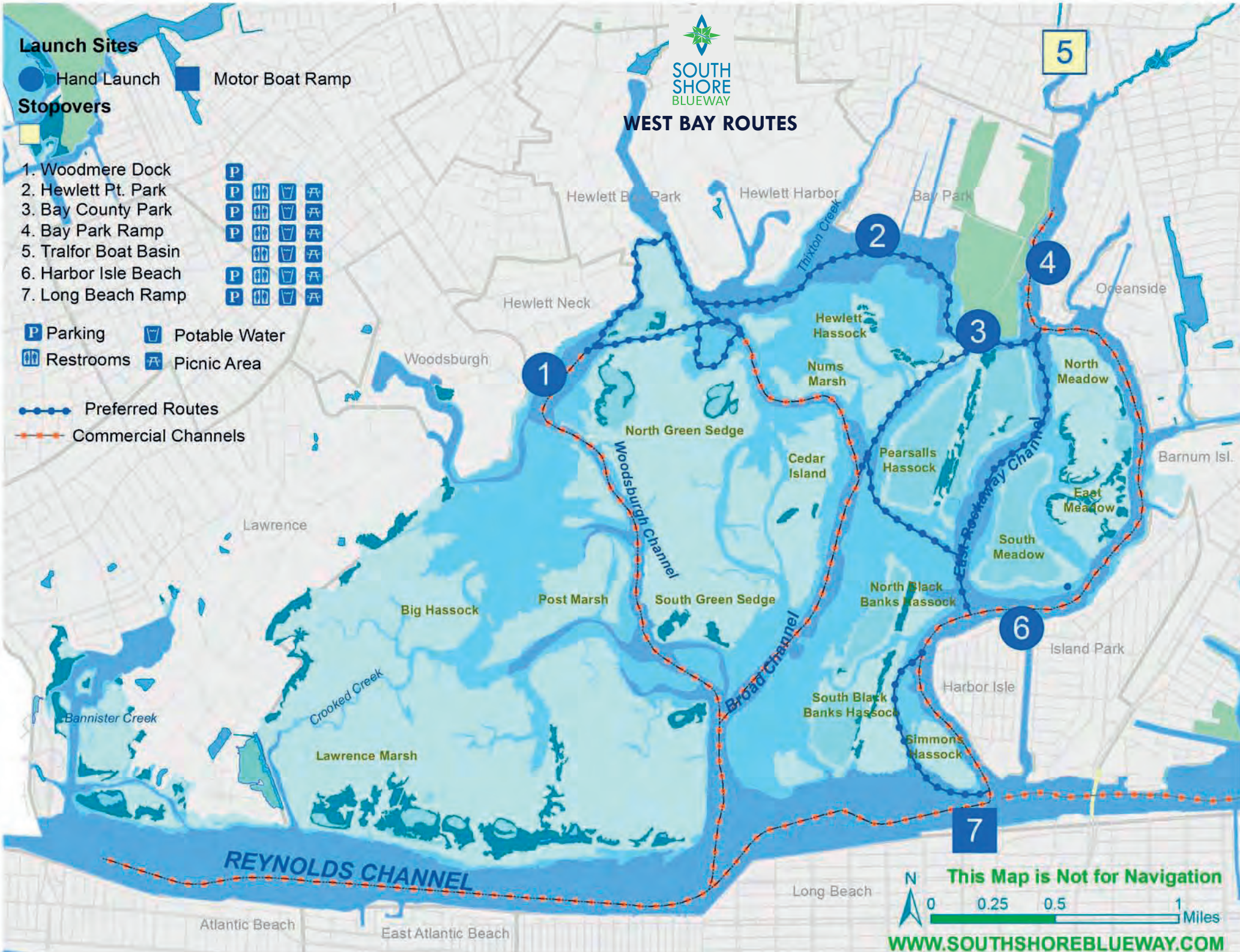
P Parking Potable Water
 Restrooms Picnic Area

● Preferred Routes

— Commercial Channels



WEST BAY ROUTES



Launch Sites

● Hand Launch ■ Motor Boat Ramp

Stopovers

■ Parking ■ Potable Water ■ Restrooms ■ Picnic Area

1. Marine Nature Area
2. Baldwin Park
3. Millburn Ramp
4. Waterfront Park
5. Sea Breeze Park
6. Cow Meadow
7. Albany Ave. Ramp
8. Jones Beach West
9. Pt. Lookout
10. Town Marina West

P Parking V Potable Water

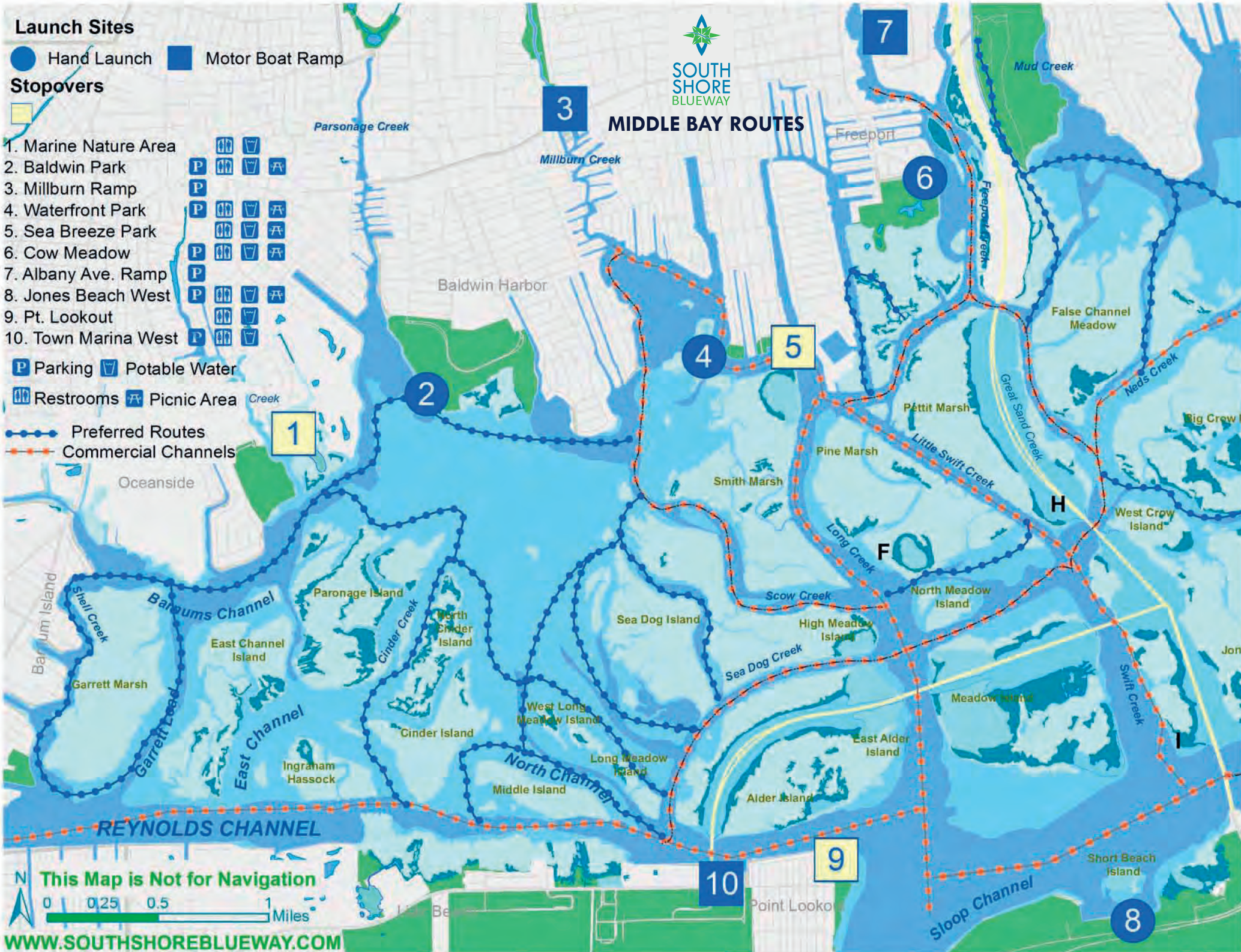
Restrooms Picnic Area

● Preferred Routes

— Commercial Channels



MIDDLE BAY ROUTES



This Map is Not for Navigation

0 0.25 0.5 1 Miles

WWW.SOUTHSHOREBLUEWAY.COM

Launch Sites

● Hand Launch

■ Motor Boat Ramp

Stopovers



1. Levy Park
2. Wantagh Ramp
3. Green Island
4. Field 10



P Parking Potable Water

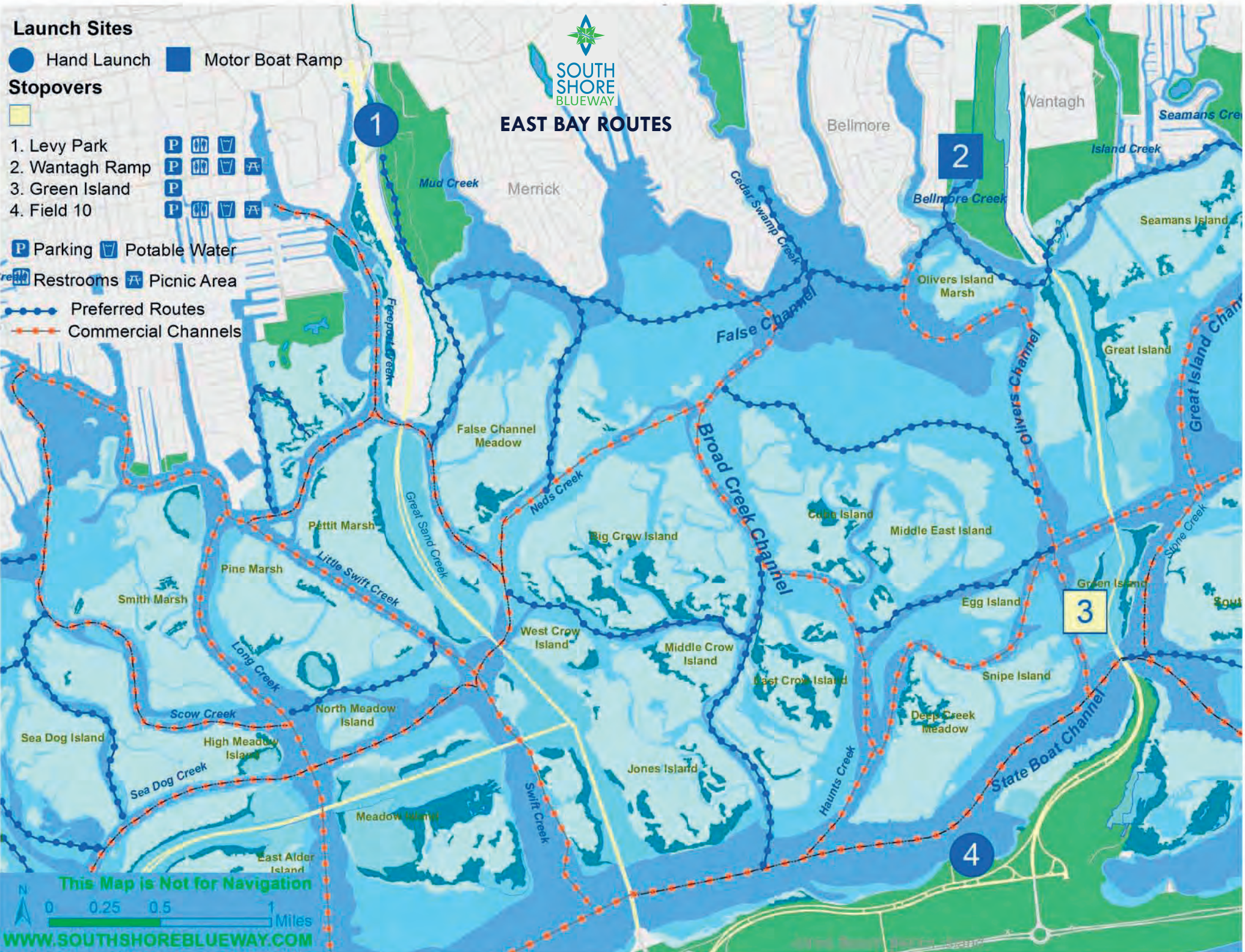
Restrooms Picnic Area

● Preferred Routes

● Commercial Channels



EAST BAY ROUTES



This Map is Not for Navigation

0 0.25 0.5 1 Miles

WWW.SOUTHSHOREBLUEWAY.COM

Launch Sites

- Hand Launch
- Motor Boat Ramp

Stopovers

1. Alhambra Road
2. Burns Park
3. Tobay Beach
4. Zachs Bay

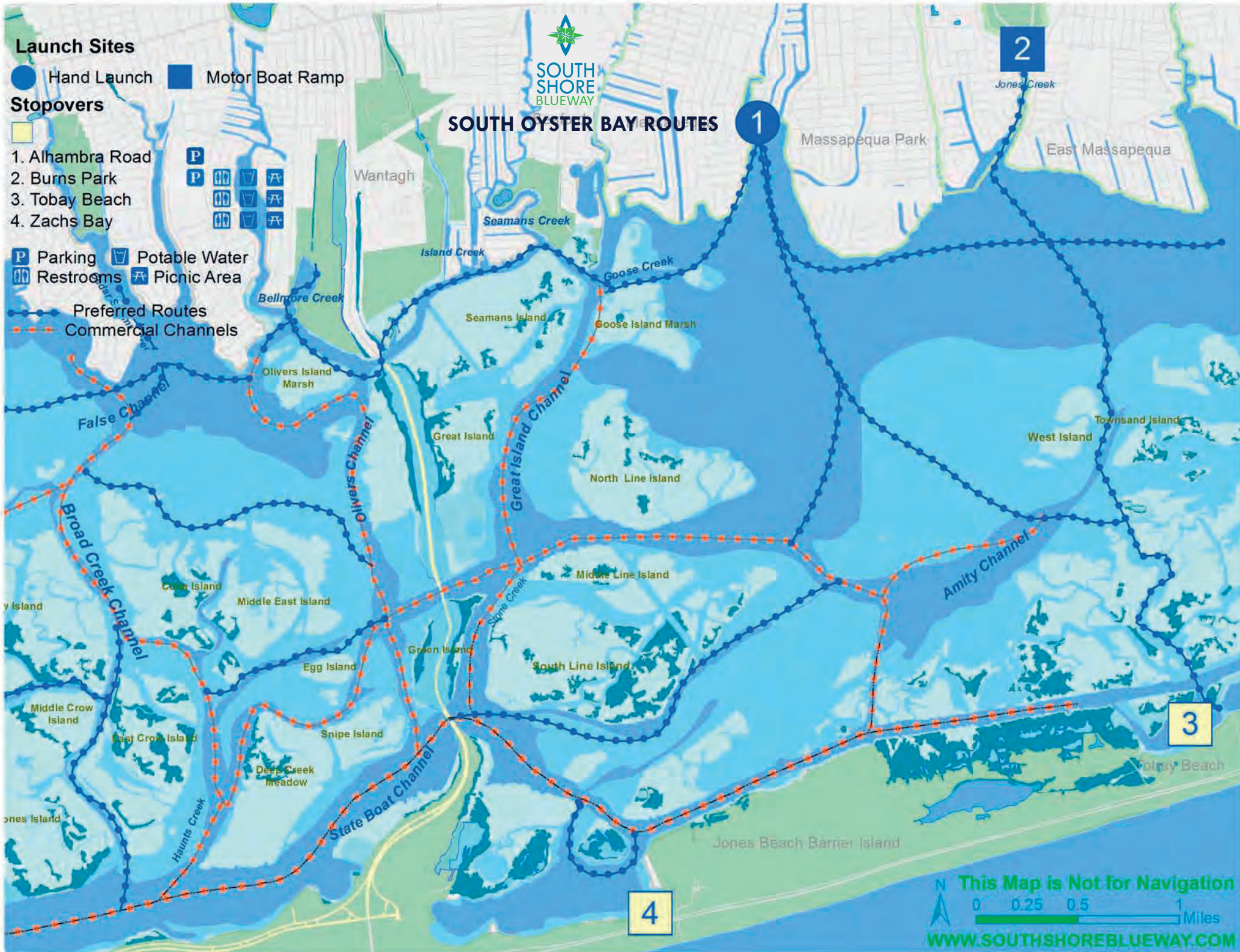
- P Parking
- Restrooms
- Potable Water
- Picnic Area

- Preferred Routes
- Commercial Channels



SOUTH
SHORE
BLUEWAY

SOUTH OYSTER BAY ROUTES



SOUTH SHORE BLUEWAY FLOAT PLAN

Name _____

Cell phone _____

Age: _____ Skill Level: ____beginner ____intermediate ____expert

Kayak color _____ PDF color _____

Launch site _____ Departure date/time _____

Intended Route/Return Time _____

Location of parked vehicle _____

Vehicle: (make/model/color) _____

Emergency Contact _____

Emergency Contact Number _____

Paddling Group Information _____

No. of people on this trip _____

Appendix E: Blueway Trail Funding Sources

Type	Use	Funding Source	Program	Web Address
Federal				
	development	Center for Disease Control	Healthy Communities	http://www.cdc.gov/healthycommunitiesprogram/
	interpretation	Environmental Protection Agency (EPA)	Enviro Education Grants	http://www.epa.gov/enviroed
	revitalization	EPA	Urban Waters Small Grants	http://www2.epa.gov/urbanwaters
	clean water projects	EPA	Targeted Watershed Grants	www.epa.gov/owow/watershed/initiative/
	economic development	HUD	Community Block Grant	www.hud.gov/offices/cpd/communitydevelopment/programs
	infrastructure	HUD	Sustainable communities	
	site enhancement	National Fish & Wildlife Foundation	5 Star Restoration Grant	http://water.epa.gov/grants_funding/wetlands/restore/index.cfm
	landscape, buffers	National Fish & Wildlife Foundation	Sandy Resiliency Grants	http://www.nfwf.org/hurricanesandy/Pages/home.aspx
	landscape	National Fish & Wildlife Foundation	Bring Back Natives	http://www.nfwf.org/Pages/bbnmorefish/home.aspx
	development	National Park Service	LWCF	http://www.nps.gov/lwcf/
	technical assistance	National Park Service	Rivers & Trails Program	http://www.nps.gov/ncrc/programs/rtca/
	ADA access	US Department of Education	recreation programs	
	development	US Department of the Interior	Land & Water Conservation Fund	http://www.nps.gov/lwcf/
	docks, storage	US Fish & Wildlife Service	Boating Infrastructure	http://wsfrprograms.fws.gov/Subpages/GrantPrograms/BIG/BIG.htm
	technical & financial sup	US Fish & Wildlife Service	Enhance coastal habitats	www.fws.gov/coastal
	boating safety	USCG / Dept. Homeland Security	Boating Safety	http://www.uscgboating.org/grants/nonprofit_grants.aspx
	equipment	USDA	Community Facilities Grants	http://www.rurdev.usda.gov/HAD-CF_Grants.html
	resource protection	USDA Natural Resource Conservation Service	Wetland Reserve Fund	http://www.nrcs.usda.gov/PROGRAMS/wrp
State				
	development, jobs	Community Development Block Grant	Economic Development	http://www.nyshr.org/Programs/NYS-CDBG/
	development	Department of Environmental Conservation	Restoration Grants	http://www.dec.ny.gov/
	water access	Department of Environmental Conservation	Environmental Justice	http://www.dec.ny.gov/public/31226.html
	develop, maintain	Department of Environmental Conservation	EPF	http://www.dec.ny.gov/about/92815.html
	guides, signage, access	Department of State	LWRP EPF	http://www.dos.ny.gov/grants.html
	access	Department of State	EPF Smart Growth Grant	http://www.dos.ny.gov/communitieswaterfronts/grantOpportunities/e
	landscaping	Department of Transportation	TEP	https://www.dot.ny.gov/programs/tep/tep-type
	facilities, maintenance	Department of Transportation	Transportation alternatives	https://www.nysdot.gov/portal/page/portal/programs/tep
	outreach, interpretation	Empire State Development	Regional Tourism Marketing	http://www.esd.ny.gov/
	landscape, infrastructure	Environmental Facilities Corp	Green Innovation Grant	http://www.efc.ny.gov/Default.aspx?tabid=461
	site design	NYS Council on the Arts	Design/Architecture	http://www.nysca.org/
	interpretation, signage	NYS Council on the Humanities	Project grants	http://www.nyhumanities.org/grants/index.php
	develop, maintenance	Office of Parks, Recreation & Historic Preservation	Recreational Trail Grants	http://nysparks.com/grants/recreational-trails/default.aspx
	transient docks	Office of Parks, Recreation & Historic Preservation	Boating Infrastructure	http://www.nysparks.com/grants/boating-infrastructure/default.aspx
	printing, signage	Parks & Trails NY	Healthy Trails, Healthy People	http://www.ptny.org/greenways/hthp/
	capacity	Parks & Trails NY	Grassroots Grant	http://www.ptny.org/advocacy/grants.shtml
Local				
	infrastructure	Nassau County Capital Programs		http://www.nassaucountyny.gov/agencies/DPW/CapitalPrograms.html
		Five Towns Community Chest		http://www.fivetownscommunitychest.org
	trail development	LI Community Foundation	environment	http://www.lcf.org
		Newsday Charities		http://www.mccormickfoundation.org
	outreach materials	Nassau Bar Association	quality of life	http://www.nassaubar.org

Appendix E: Blueway Trail Funding Sources

Private			
\$1000 to stewardship	ACA & LL Bean	Club-Fostered Stewardship	http://www.americancanoe.org/?page=LLBean_CFS_Grant
boating safety	Boat US Foundation	Grassroots Grant	http://www.boatus.com/foundation/Grants/
capacity	National Public Lands Association	Everyday Capacity Grant	http://www.publiclandsday.org/
programs, events	Outdoor Foundation Pack Project	Active outdoor recreation	www.cybergrants.com/on/thepack/lp/
event	Outdoor Foundation - Paddle Nation	Project Grant	http://outdoornation.org/page/2012-paddle-nation-project-grants
youth programs	Take Me Fishing	boating safety, youth	http://www.takemefishing.org/
printing, equipment	Norcross Wildlife Foundation	environment	http://www.norcrossws.org/
programs	Aetna Foundation	Regional Grants	http://www.aetna-foundation.org
signage	Coca-Cola Foundation	Healthy Active Lifestyle	http://www.coca-colacompany.com/our-company/the-coca-cola-found
youth programs	Orchard Foundation	Environment	http://www.orchardfoundation.org/
youth programs	National Safe Boating Council	Boating Safety	http://www.safeboatingcouncil.org/
site design	Rauch Foundation	Environment	http://www.rauchfoundation.org
youth programs	Cigna Foundation	Wellness, environment	http://www.cigna.com/about-us/corporate-responsibility/cigna-founda
site restoration	Tourism Cares	Conservation	http://www.tourismcares.org/grants
cleanup	American Water's	Environmental Grant Program	http://www.amwater.com/
cleanup	Tom's of Maine	Community Projects	http://www.tomsofmaine.com/community
signage	Deutsche Bank Americas Foundation	Environment Sustainability Grant	https://www.db.com/cr/en/environment/index.htm
stewardship, youth	Captain Planet Foundation	Water environment	http://captainplanetfoundation.org
tools for projects	Home Depot Foundation	Community Impact Grants	http://www.homedepotfoundation.org/
programs	Women's Sport's Foundaiton	GoGirlGo Grants	http://www.womenssportsfoundation.org/en/home/programs/grants